

# DRESS CODE

## TEA TREE GULLY GOLF CLUB

Members and guests shall at all times be in attire appropriate to the area or facility of the Club which they are using, or in which they are located. The term "appropriate attire" shall mean clean, smart casual, presentable clothing, in good condition as illustrated and not offensive to other Members or to Management.

### **GOLF COURSE (INCLUDES PRACTICE AREAS) AND CLUBHOUSE**

The following is acceptable:

- tailored shorts or pants
- 3/4 length tailored pants are acceptable but they must be plain in style
- long, short or ankle socks are all acceptable but must be plain white in colour or plain white with golf club logo or manufacturers logo
- shirts must have collars unless specifically designed for golf and only shirts designed to worn outside are acceptable

The following items are unacceptable:

- football, running, board shorts or elastic or draw string waisted shorts
- shirts or tops displaying large motifs, numbers or advertising (an exemption applies on corporate days where a common theme exists)
- multi-colour, camouflage or frayed style pants
- denim of any description (course only)
- Tracksuit pants or tops, gym attire and singlets
- Rubber thongs or bare feet
- Golf shoes with metal spikes
- Caps and hats in the Members Lounge and Dimples Restaurant
- Caps worn back to front
- Hooded tops

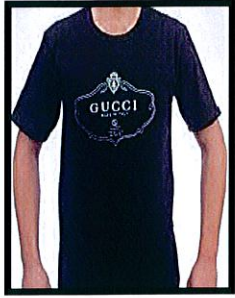
### **CLUBHOUSE**

Neat casual dress applies. Footwear must be worn in the Clubhouse at all times. In the Members Lounge and Dimples Restaurant golf shoes may be worn before golf, during a round but are not after golf. Dress thongs and sandals/casual shoes may be worn without socks. Thongs and sandals designed for beachwear are not permitted.

### **MEMBERS PLEASE NOTE**

As a Member of this Club you have the responsibility of informing your guests of our Club's dress requirements. This should be done prior to the entry to the Club, Golf Course or Practice Facilities in order to avoid any embarrassment. The Board will determine what is suitable attire and the Board Members, together with designated staff, will require compliance by a member or guest where appropriate.

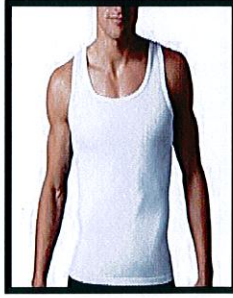
# UNACCEPTABLE



Excessive Logo



Business Shirt  
Untucked



Singlet Top

SHIRTS



Business Shirt  
Untucked



Denim  
(Course only)

SHIRTS



Denim of any  
description  
(Course Only)

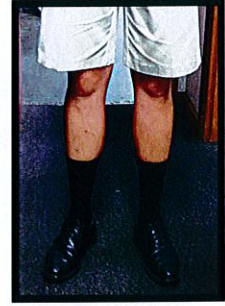


Tracksuit  
Pants

TROUSERS



T Shirts  
(Course only)



Coloured Socks



Football Shorts  
or Similar



Loud Shorts

SHORTS



HOODED TOPS

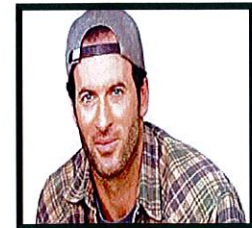


Theme Thongs



Rubber Thongs

SHOES

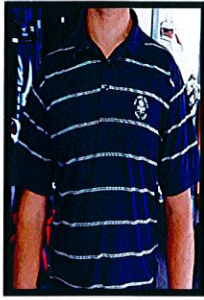


Cap Back  
to Front

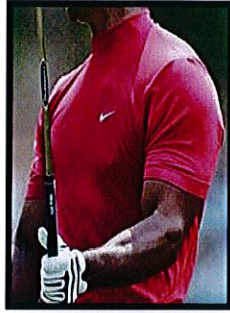
HATS

# ACCEPTABLE

## SHIRTS



Collar Shirt



Collarless  
Golf Shirt

## TROUSERS



Tailored  
Pants

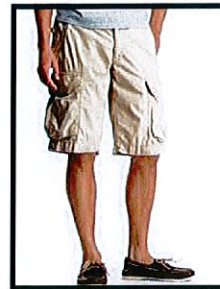
## SHORTS



Tailored  
Shorts



3/4 Length Shorts

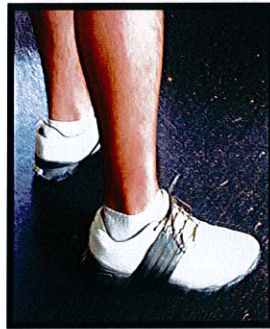


Cargo Shorts

## SOCKS



White Club  
Sport Logo  
Socks



Anklet Socks

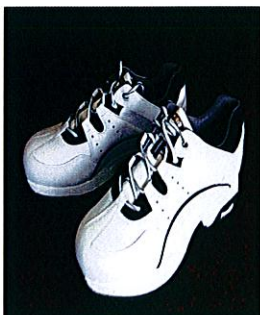


Plain White Socks



White Manufacturers  
Sports Socks

## SHOES



Athletic  
Sport Golf Shoe

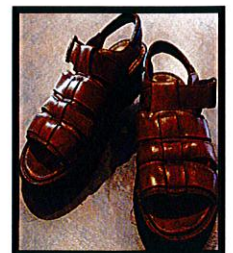


Soft Spikes

## CLUBHOUSE



Dress Thong



Dress Sandal